



# GAT MONTHLY MEMBERSHIP PROGRESS REPORT

Results as of: 6/30/2023

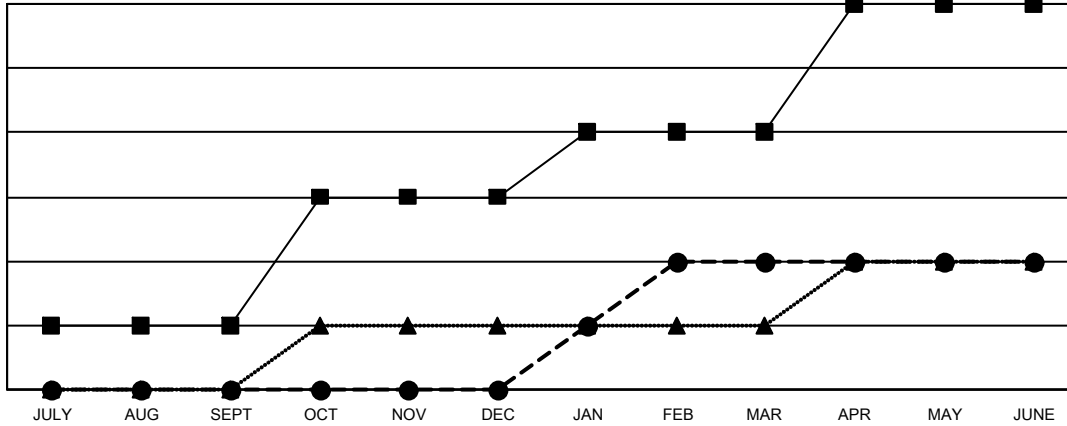
Multiple District 16

LOCATION: NEW JERSEY

Clubs			
RESULTS FOR 2022-2023			
QUARTER	NEW CLUB GOAL	NEW CLUBS	DROPPED CLUBS
JULY/AUG/SEPT	1	0	1
OCT/NOV/DEC	2	0	6
JAN/FEB/MAR	1	2	0
APR/MAY/JUNE	2	0	5

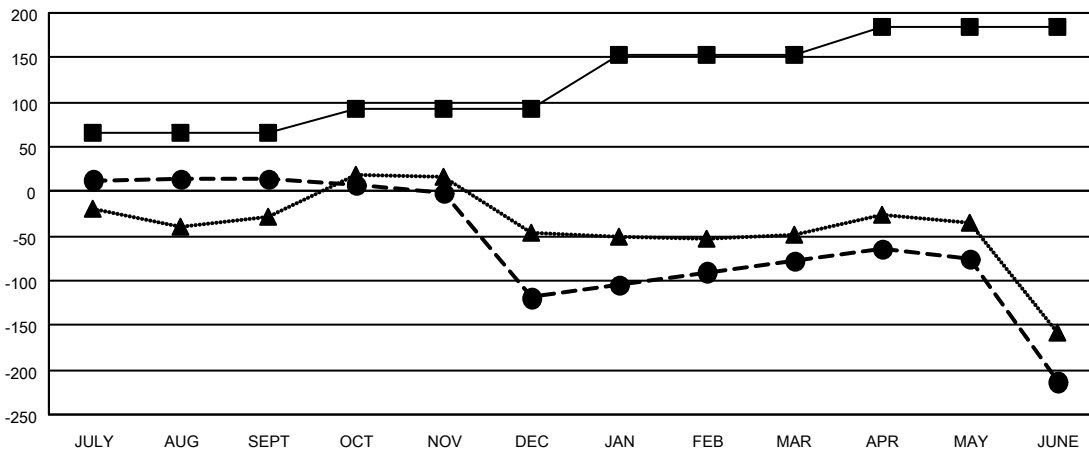
Members			
RESULTS FOR 2022-2023			
QUARTER	MEMBER GROWTH NET GOAL	MEMBER GROWTH ACTUAL	DROPPED MEMBERS ACTUAL (including transfers)
JULY/AUG/SEPT	65	114	92
OCT/NOV/DEC	28	93	219
JAN/FEB/MAR	60	173	123
APR/MAY/JUNE	32	118	241

GOALS AND ACTUAL NEW CLUBS CUMULATIVE



- - CURRENT YEAR GOALS FOR NEW CLUBS
- - CURRENT YEAR ACTUAL NEW CLUBS
- ▲ - LAST YEAR ACTUAL NEW CLUBS

GOALS AND ACTUAL MEMBERS CUMULATIVE



- - MEMBER GROWTH NET GOAL
- - MEMBER GROWTH ACTUAL
- ▲ - LAST YEAR MEMBERSHIP ACTUAL

DROPPED CLUBS: 12	85 CLUBS OF 171 ADDED 1 OR MORE NEW MEMBERS	<b>GENDER DISTRIBUTION</b>
<b>DROPPED MEMBERS</b>	<a href="#">CLICK HERE FOR CUMULATIVE MEMBERSHIP DATA</a>	MALE 2,453 (64.76%)
DECEASED 66		FEMALE 1,329 (35.08%)
CLUB CANCELLED 117		NON BINARY 0 (0.00%)
OTHER 492		PREFER NOT TO ANSWER 6 (0.16%)
<b>TOTAL 675</b>		TOTAL FAMILY UNIT MEMBERS 723
		FAMILY MEMBERS PAYING HALF DUES 378